



**TRANSCRAFT** <sup>â</sup>  
**DTL-2100**™

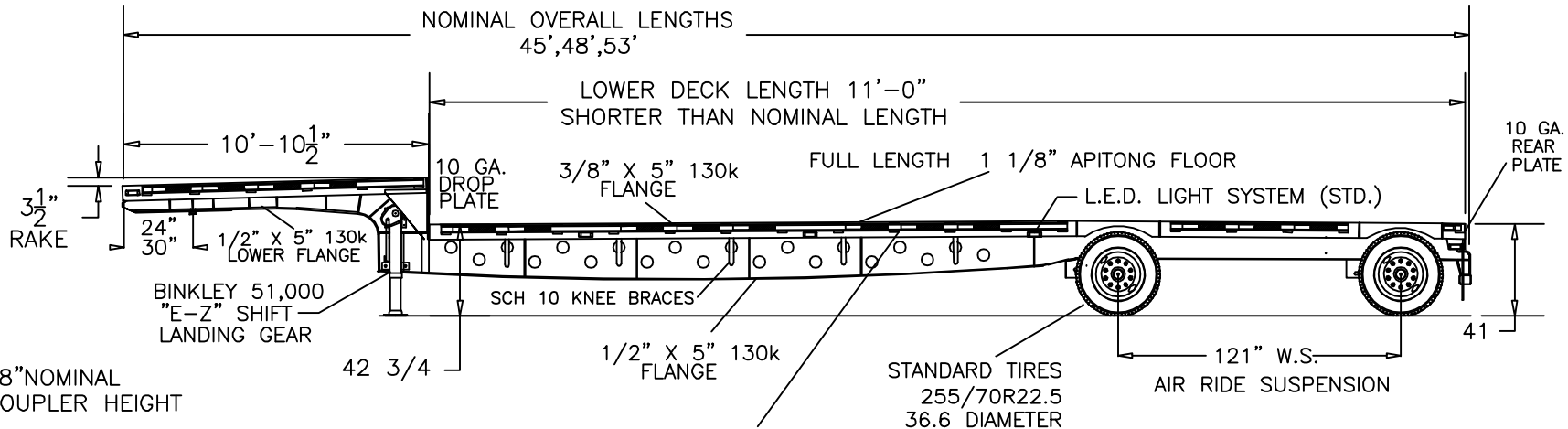
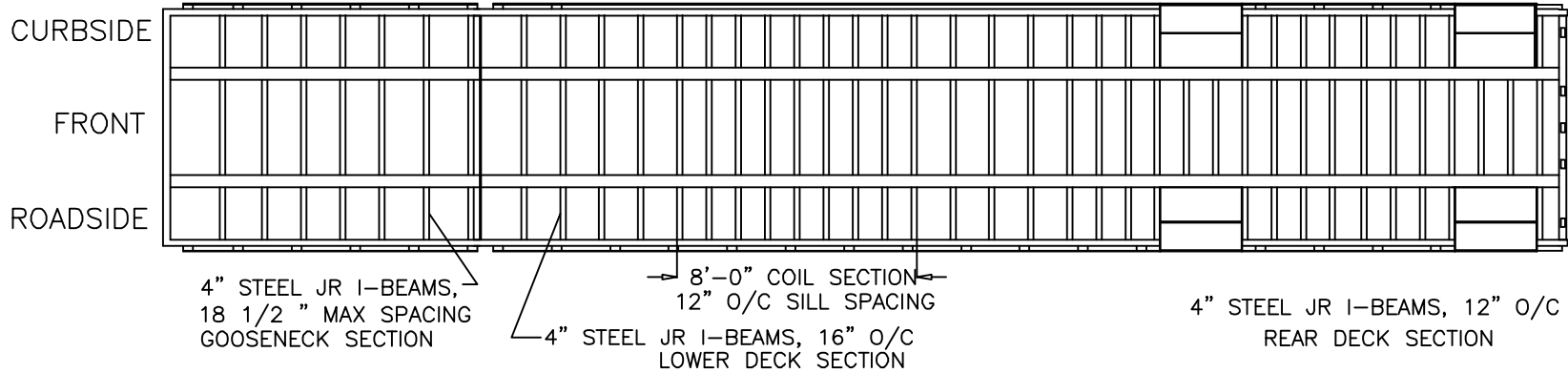
# DTL-2100 Standard Specifications

|   |  |
|---|--|
| <b>Front Plate</b>                            | Fabricated Hi Tensile Steel, square corners, no stake pockets.   |
| <b>Rear Plate</b>                             | Hi Tensile Steel, 13" deep section with internal stake pockets and recessed lites with back fully enclosed. 11 1/4" deep extra heavy duty rubber dock bumpers along with a 4" x 5" tubing bumper and heavy duty bracing provide maximum protection for the rear of the trailer.        |
| <b>5th Wheel Plate</b>                        | SAE King pin, 30" location, 1/4" skid plate tapers up front for easy pickup. 18", 24", or 36" location optional.   |
| <b>Main Beam</b><br>(Lightening holes in web) | Built for maximum payload with a beam capacity of 60,000# in 10' or 55,000# in 4'. Assembled with heat treated 130,000# yield strength flanges and high tensile steel webs. GVWR 80,000# 3/8" x 5" 130K Top Flanges, 1/2" x 5" 130K Bottom Flanges 3/16" Center & 1/4" G.N. & Rear Web |
| <b>Upper Frame</b>                            | 4" Jr I Sills, 16" o/c lower deck with 12" o/c in coil and suspension area   |
| <b>Lower Frame</b>                            | Pipe Braces running from bottom of sills to main beams with matching inner cross pipe.   |
| <b>Side Rail</b>                              | 10 gauge fabricated Side Rail, 1 5/8" x 3 1/2" x 3 1/2" x 1/4" stake pockets, 3/8" x 2 1/2" rubrail with recess for reflective tape, double pipe spools between pockets.   |
| <b>Landing Gear</b>                           | Premium EZSHIFT gear on Binkley 51000, 140,000# static load rated legs with 10" x 10" square shock-mounted sand shoes.   |
| <b>Suspension</b>                             | IntraaxAA-230L Airide with "Quick-Align" feature. 121" W/C Tandem.   |
| <b>Axles</b>                                  | Integral axle with tapered spindle, type 3030 MGM spring brakes, and Haldex automatic slack adjusters.   |

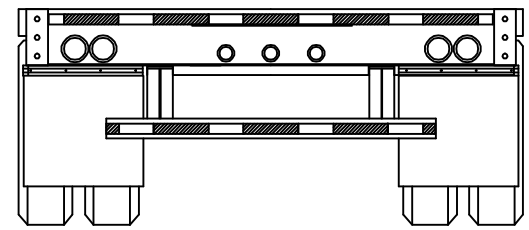
|                                      |  |
|--------------------------------------|--|
| <b>Hub, Brake Drum, &amp; Wheels</b> | 8.25-22.5 hub piloted steel disc, outboard mounted cast hubs and drums.  |
| <b>Brakes</b>                        | D.O.T. Anti-Skid Brake System, four sensor, two modular controls. Meritor Wabco. Four wheel sensing. 16 1/2" x 7" extended service linings.  |
| <b>Electric</b>                      | Male pin connectors to all lights with double seals. Locked in place with a positive retention pin to eliminate the biggest reason for wiring problems - loose connections. All required splices are sonic welded. All wires are double insulated in a sealed loom with molded double seals. This system was designed for Transcraft by USA Harness.<br><br>Exclusive Grote male pin connection <u>LED lights are standard</u> for a total lifetime, trouble free, electrical system with a 5 year warranty on materials and labor. This system includes 17 lights, 2 on front, 3 on each side, 4 combination 4" rear lights, 3 round identification lights, ABS lamp, and license light. There is a simple plug-in provision for accessory power. |
| <b>Floor</b>                         | 1 1/8" Apitong.  |
| <b>Paint</b>                         | Steel components are cleaned, phosphatized, and primed with a 2-part universal primer, then painted with a 2-part black urethane.  |
| <b>Reflective Tape</b>               | The highest quality 3M reflective tape is installed in the recess of the rubrail for protection, throughout the trailer except on the rear cross tube of bumper.   |
| <b>Tires</b>                         | 255/70R 22.5 General ST250LP   |

| 10' Beam Capacity |                   | 4' Beam Capacity |                   |
|-------------------|-------------------|------------------|-------------------|
| 49" Axle Spacing  | 121" Axle Spacing | 49" Axle Spacing | 121" Axle Spacing |
| 55,000#           | 60,000#           | 50,000#          | 55,000#           |

48' X 102" DROP DECK TRAILER SHOWN



STEEL SIDE RAIL, SPACERS & STAKE POCKETS  
ALUMINUM SIDERAILS, POCKETS & SPOOLS AVAILABLE



THE FOLLOWING TOLERANCES  
APPLY TO ALL DIMENSIONS  
UNLESS OTHERWISE SPECIFIED  
FRACTIONAL: +/- 1/2"  
DECIMAL: +/- .005"

*Transcraft*

|             |                |              |
|-------------|----------------|--------------|
| DR. BY: SMG | NAME: DTL-2100 | REV: F       |
| WEIGHT:     | DATE: 8/18/00  | P/N: S148364 |
|             |                | SHEET 1 OF 1 |